



ARCHITECTURAL HARDWOOD DECKING, CLADDING & CEILING SYSTEMS

# SHOU SUGI BAN

CHARRED TIMBER  
CLADDING



1800 894 400  
info@mortlock.com.au  
www.mortlock.com.au



## THE SYSTEM

---

**Shou-Sugi-Ban™**, also known as Yakisugi Cladding, is a traditional Japanese method of charring timber with fire. This process creates a carbon layer on the surface of the boards, which protects the timber and reduces maintenance requirements. At Mortlock Timber, we manufacture our Shou Sugi Ban finish in-house, giving us complete control over the quality of the final product.

Mortlock Timber has long been at the forefront of modern Shou Sugi Ban manufacturing. Our charred finishes are the result of years of specialised development, controlled thermal processing and rigorous quality refinement. Today, our production methods deliver a consistently accurate char, reliable durability and an architectural-grade finish that honours tradition while meeting the demands of contemporary construction.

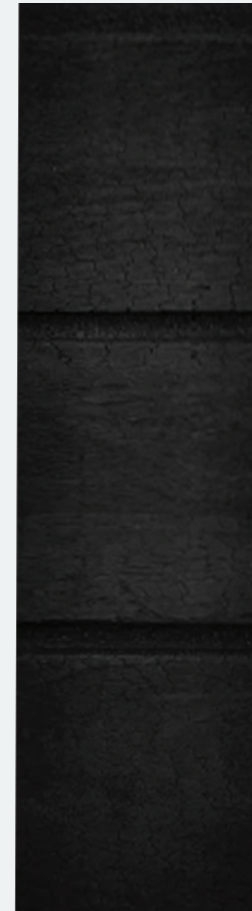


## TIMBER SPECIES AND SIZES



### BURNT ASH SHOU SUGI BAN - PREMIUM OPTION

Burnt Ash is manufactured from thermally modified American Ash, which makes it highly durable and stable compared to many standard Australian hardwoods. This stability allows the timber to be charred evenly, resulting in a thicker char layer than timbers such as Spotted Gum or Jarrah. As a result, the charred finish lasts significantly longer and requires minimal maintenance. It is important to note that Burnt Ash does not have a BAL rating, so it is not suitable for projects where BAL compliance is required.



### SPOTTED GUM SHOU SUGI BAN

**BAL 12.5, 19 & 29**

Spotted Gum is a durable Australian hardwood that is valued for its strength and versatility. It is often chosen where a BAL rating is required, as it achieves a BAL 29, making it suitable for projects in higher bushfire risk areas. When charred, Spotted Gum develops a striking finish, although the process requires careful control to maintain the timber's stability. Regular maintenance helps preserve its appearance and ensures long-lasting performance.





## TIMBER SPECIES AND SIZES



### JARRAH SHOU SUGI BAN

#### BAL 12.5 & 19

Manufactured from Jarrah, this timber is primarily used as a cost-effective option. Similar to Spotted Gum, Jarrah is less stable than Burnt Ash, meaning it cannot be charred as deeply as some other timbers. Regular maintenance is required to keep its finish looking its best. Jarrah is well suited for a wide range of projects and applications.



### IRON GUM SHOU SUGI BAN

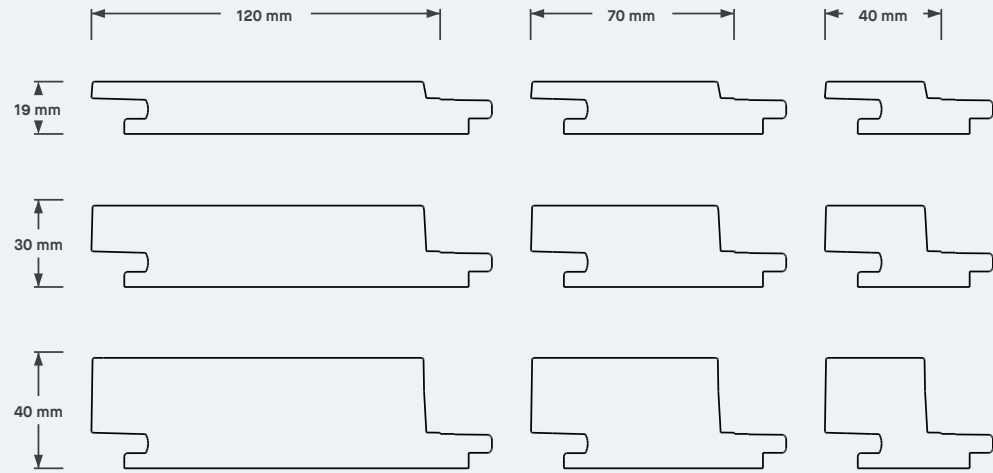
#### BAL 19

Manufactured from Iron Gum, this dense Australian hardwood is celebrated for its exceptional strength, durability, and rich natural grain. When charred, Iron Gum gains enhanced weather resistance and takes on a bold, refined appearance that accentuates its innate character. With a BAL 19 rating, it is suitable for use in areas with moderate bushfire risk, offering reliability, resilience, and an eye-catching finish in one.





## SHOU SUGI BAN PROFILES & SIZES



Note: 40x19 not available in Burnt Ash



## FREQUENTLY ASKED QUESTIONS

### Why is selecting a stable timber like Burnt Ash important?

When timber is heated to extreme temperature it can cause the timber to split and warp. As Burnt Ash is an extremely stable timber the timber stays flat during the Shou Sugi Ban or charring process allowing a thicker char layer on the surface. As the char layer is thicker, this means it lasts longer when exposed to the weather.

### When would I choose Spotted Gum or Jarrah over Burnt Ash?

Spotted Gum and Jarrah are both BAL-rated timbers, with Spotted Gum meeting BAL 29 and Jarrah BAL 19. Burnt Ash, on the other hand, does not carry a BAL rating. For projects that require BAL compliance, Spotted Gum or Jarrah will be the suitable options, depending on the rating needed. Both are also budget-friendly choices; however, when considering lower-cost alternatives, it's important to factor in the long-term maintenance expenses. Burnt Ash, as mentioned above, has a thicker char layer, allowing it to last 2–3 years longer without the need for maintenance or re-oiling.

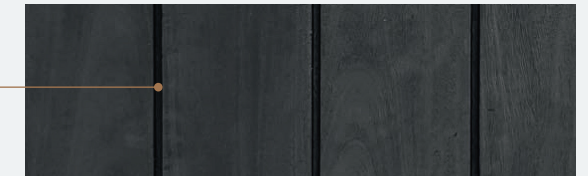
### What process is used to char the timber?

At Mortlock Timber, our Shou Sugi Ban timber is crafted in-house using a proprietary charring machine that we designed and built ourselves. Before releasing the product to the market, we undertook over two years of rigorous testing and refinement, during which we perfected the process to minimise common issues such as warping and splitting. Through this extensive development, we mastered the art of controlled charring, ensuring a consistently stable and durable product. Our system also incorporates a unique cooling method, which is critical for achieving an even, high-quality charred finish.

### What is unique about our charring process?

What makes our product different is the evenness of the charred finish and the ability to char right into the shadow line of the Trendplank profile (see diagram below). When timber is not charred properly, it tends to weather unevenly, which causes some areas of the façade to lose their charred surface and appear lighter after only a few months of exposure. This results in an inconsistent look that is not aesthetically pleasing. Some other manufacturers address uneven surfaces by covering them with a black stain. Our product, however, achieves its black colour naturally because the timber is charred evenly.

Shadow line



### What is the difference with a black stained timber and Shou Sugi Ban?

Black stained timber requires more maintenance. Shou Sugi Ban has a char layer which is a thicker protective layer that takes longer to weather.

### How do you pronounce Shou Sugi Ban?

While there are a few pronunciation variations, we say it “Shoe Soo-gi Ban”



## FIRE COMPLIANCE

If specific fire requirements and certification is required for your project, this must be requested and approved during the design phase to avoid delays during construction. If this is not requested prior to ordering material, Mortlock Timber may not be able to provide the required certification.

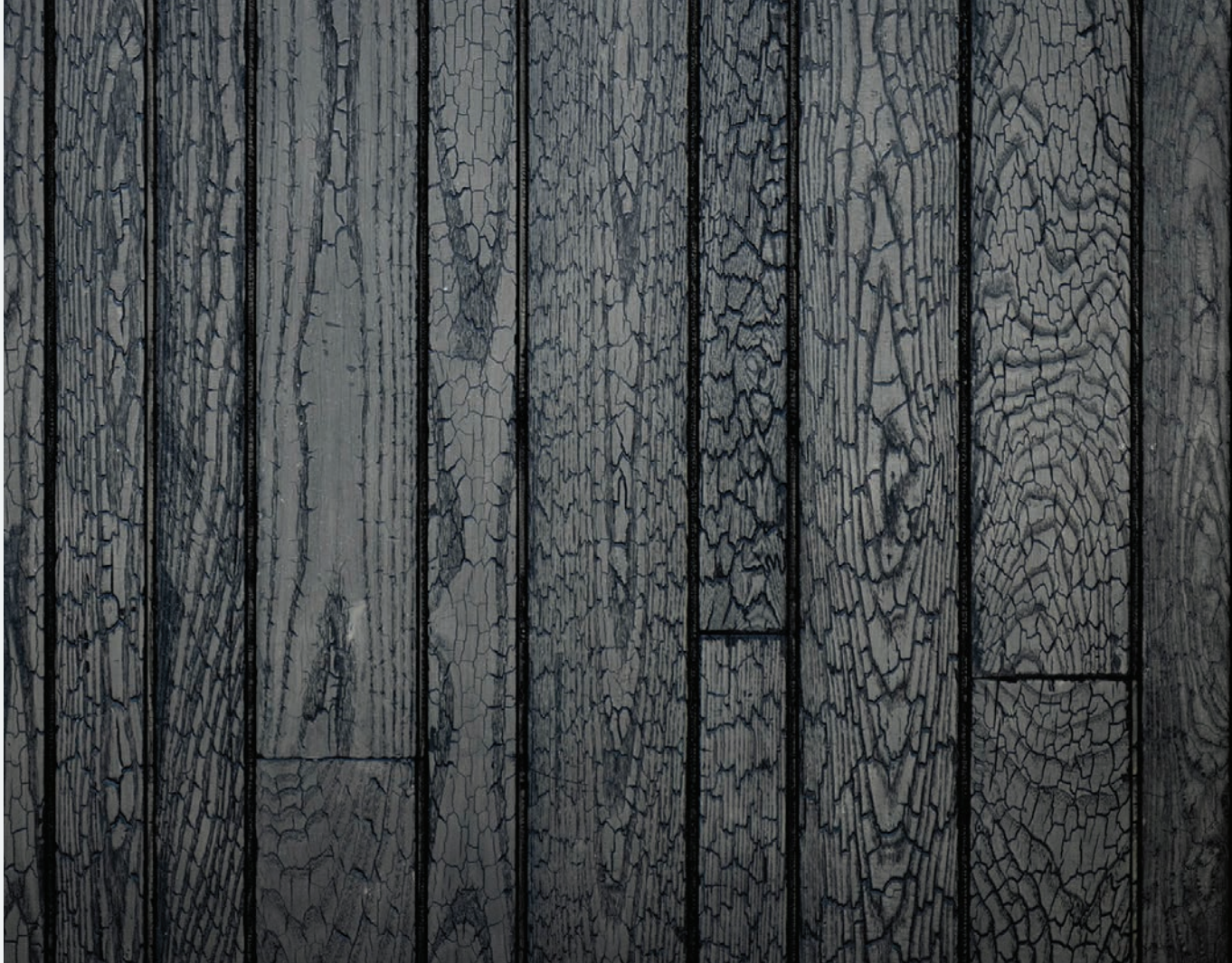


# TIMBER SPECIES FIRE DATA

TIMBER SPECIES	BAL RATING	GROUP NUMBER
Burnt Ash - Shou Sugi Ban	Non-BAL Compliant	Group 3
Jarrah - Shou Sugi Ban	BAL 12.5 & 19	Group 3
Spotted Gum - Shou Sugi Ban	BAL 12.5, 19 & 29	Group 3
Irongum - Shou Sugi Ban	BAL 12.5 & 19	Group 3

If fire reports are required, please contact Mortlock Timber.





## FINISHING

Timber can be supplied uncoated or pre-oiled. Shou Sugi Ban comes standard with Cutek CD50 Black Ash coating which is a penetrating oil and designed for external use. You may see charcoaled surface of the timber rubbing off during installation, this however will reduce after the timber is exposed to the weather for 2-3 months. Further details and application information can be found at [www.cutek.com.au](http://www.cutek.com.au)

For applications where charcoal rubbing off is not ideal, Mortlock recommends using WOCA Black Oil. One coat applied in the factory and a second coat applied once timber is installed. Further details and application information can be found at [www.wocadenmark.com/shop/product/exterior-wood-oil](http://www.wocadenmark.com/shop/product/exterior-wood-oil)



## CURVED WALLS

Convex curved walls can be created with Shou Sugi Ban Timber cladding system to a certain radius. Care must be taken when curving timber cladding as this opens the tongue and groove reducing the water tightness of the cladding. Running a sealant (Sikaflex 11FC or similar) in the groove when installing is recommended.

### CURVED WALL MINIMUM RADIUS

BOARD SIZE	MINIMUM RADIUS
120×19	1400mm
70×19	700mm

Tighter radii can be achieved with custom profiles, contact Mortlock Timber to discuss your requirements.

## SPECIFICATION

### EXAMPLE SPECIFICATION

EXAMPLE SPECIFICATION	
Product Name	Shou Sugi Ban Timber Cladding
Timber Species	Burnt Ash
Finish	120×19, 120×19 & 70×19 repeating
Fire Requirements	None
Corner Trims	External Corners to have X Profile with 22×22 Burnt Ash Infill, Internal Corners to have 22×22 Internal Burnt Ash Corner Profile. Shou Sugi Ban Finish
Contact	Mortlock Timber Group 1800 894 400 <a href="mailto:info@mortlock.com.au">info@mortlock.com.au</a> <a href="http://www.mortlock.com.au">www.mortlock.com.au</a>



## PRICING & TENDER SUBMISSION

---

To make large scale projects and tenders easier, we are able measure from PDF drawings which are returned with a detailed BOQ and an itemised proposal for cross referencing.

We require a full set of plans to the architects specifications. Where corner trims are not specified, we allow for the standard aluminium X Profile with the 22x22 timber infill in the same timber species as the cladding. Email plans or Tender invite to [info@mortlock.com.au](mailto:info@mortlock.com.au)



## INSTALLATION NOTES

To ensure long-term performance and maintain warranty coverage, Shou Sugi Ban cladding must be installed in accordance with Mortlock Timber's installation guidelines, relevant Australian Standards, and the National Construction Code (NCC).

### GENERAL GUIDANCE & LEGAL NOTICE

© The drawings in this guide are the property of Mortlock Timber Pty Ltd and must not be copied or modified without permission.

This information and the accompanying drawings are provided as guidelines only and are subject to change without notice. They illustrate best-practice methods for installing Shou Sugi Ban cladding.

To maintain your product warranty, Shou Sugi Ban cladding must be installed in accordance with NCC requirements and relevant Australian Standards.

All structural, fire, acoustic, plumbing, and electrical components must be designed and approved by a suitably qualified engineer to ensure regulatory and safety compliance.

### GENERAL INSTALLATION NOTES

#### WEATHER PROTECTION

If permanent flashings or membranes have not yet been installed, temporary flashings must be used during installation to prevent moisture ingress. Wall cavities are not designed to manage bulk water; any water entry can cause timber cupping or expansion.

#### AVOID UNEVEN WEATHERING

Cladding left exposed to sunlight before installation, or subjected to prolonged shading from scaffolding, may develop uneven weathering. This uneven appearance typically fades after several months of consistent exposure.

#### GROUND CLEARANCE

Provide ground clearance in accordance with NCC 2022 Part 7.5.7. Proper clearance prevents splashback and long-term moisture issues.

### VENTILATION & DRAINAGE

Maintain a 20mm continuous air and drainage cavity behind the cladding to allow the timber to breathe, as detailed in the drawings.

Note: To maintain performance, thermal and hygrothermal behaviour should be assessed as part of project-specific design. Software such as WUFI® can assist in validating wall performance in your climate zone.

### EXPANSION GAPS & BOARD ALIGNMENT

Loose lay boards with a 1–2mm expansion gap between boards to allow for natural timber movement. Pre-mark layout on battens to avoid misalignment. Boards must not be installed tightly together.

### WATERPROOFING

Timber cladding is not a waterproof barrier. It is the builder's responsibility to ensure full waterproofing using appropriate membranes, flashings, and sarking, as per architectural documents and the Building Code of Australia.

We recommend the Pro Clima system, including Solitex Extasana membranes and Tescon sealing tapes. Equivalent membrane systems may also be used and will not void Mortlock Timber's warranty, provided installation complies with the Building Code. For membrane installation guides, visit: <https://proclima.com.au>

### TANNIN LEACHING

Some timbers can leach tannins when exposed to moisture, which may stain nearby surfaces like concrete, render, or stone. This is most common during early weathering.

To minimise tannin leaching:

- Seal end grains before installation
- Protect nearby surfaces during early exposure
- Clean any tannin stains immediately

Tannin leaching typically reduces over time with continued weathering.

More information: <https://www.mortlock.com.au/learning/timber-leaching/>

### INTERACTIVE 3D INSTALLATION SUPPORT

For animated 3D models of Shou Sugi Ban installation details, visit Working Spec: <https://workingspec.com.au/models>



## INSTALLATION NOTES

### SCREWS

We recommend using SPAX façade screws for secure and discreet cladding installation. These are designed specifically for timber façades and typically do not require pre-drilling due to their self-drilling tip.

Pre-drilling may be required depending on the timber species selected or near board ends to prevent splitting.

Specifications:

- Surface: Stainless steel A2 304
- Head type: Flat countersunk
- Units per box: 100
- Thread diameter: 4mm
- Length: 45mm
- Bit size: T-15

### SCREW POSITIONING

Shou Sugi Ban features a screw locating line on the tongue to guide fixing placement. Screws should be installed on a slight angle through the tongue, as detailed in the installation drawings. This ensures a secure hold while allowing the next board to conceal the screw head.

### END MATCHING

End matching is a tongue and groove profile on the board ends that allows them to be joined off-stud, providing:

- Improved water resistance
- Faster installation (no trimming required)
- Reduced material waste

Installation Instructions:

- Apply Sikaflex 11FC or equivalent to the groove joint.
- Push boards together until fully engaged.
- Trim any excess sealant after drying.
- For vertical cladding, install boards with the tongue facing upward.

### EXPANSION ALLOWANCE

Timber is a porous material and some movement should be expected, so it's important to consider the movement effects early on. Shou Sugi Ban is not designed to be pushed up tight together, we recommend spreading the boards 1-2mm apart rather than completely tight together depending on the climate of the area.

## CODEMARK CERTIFICATION & NCC COMPLIANCE

Trendplank Timber Cladding meets the National Construction Code (NCC) performance requirement FP1.4 – Weatherproofing, when installed in accordance with:

Relevant Australian Standards, including AS 1684.2, AS 1684.3, and AS 1684.4

Mortlock Timber's Installation Guidelines, as outlined in this brochure

While CodeMark certification is a recognised voluntary scheme used to demonstrate NCC compliance for products with unclear regulatory pathways, it is not required for Trendplank. This is because Trendplank is designed in line with well-established construction methods and tested Australian standards, providing a clear and proven compliance route without the need for additional certification.

However, should formal documentation or further compliance support be required for a specific project—such as for building surveyors or certifiers—please contact Mortlock Timber directly. Our team can provide detailed installation guides, performance data, or compliance statements to assist with project approvals.





## INSTALLATION STEPS BY WALL TYPE

### VERTICAL CLADDING - TIMBER FRAME WALL

1. Install breathable building membrane as per manufacturer's guide.
2. Fix horizontal battens at 450mm centres over 20mm cavity spacers.
3. Ensure a continuous drained and ventilated cavity as per drawings.
4. Install base angles, corner trims, and flashings as per the drawings and specs.
5. Mark board layout on battens to maintain spacing and alignment.
6. Fix boards using SPAX façade screws, ensure end-matching tongue is facing upwards.
7. Conceal fixings with the groove of the next board.

### VERTICAL CLADDING - MASONRY WALL

1. Ensure the masonry wall is properly waterproofed
2. Fix horizontal battens at 450mm centres over 20mm cavity spacers to masonry.
3. Maintain ventilation and drainage cavity behind battens.
4. Install all trims and flashings as per drawings and specifications.
5. Mark layout for alignment and spacing.
6. Fix boards using SPAX façade screws, ensure end-matching tongue is facing upwards.
7. Conceal fixings with the following board.

### HORIZONTAL CLADDING - TIMBER FRAME WALL

1. Install breathable building membrane as per manufacturer's guide.
2. Fix vertical battens at 450mm centres.
3. Maintain a 20mm cavity behind cladding boards to allow for proper drainage and ventilation.
4. Install base angles, trims, and flashings.
5. Pre-mark layout for board alignment.
6. Fix boards using SPAX façade screws, ensure tongue is facing upwards.
7. Conceal fixings with the next board.

### HORIZONTAL CLADDING - TIMBER FRAME WALL

1. Ensure the masonry wall is properly waterproofed.
2. Fix vertical battens at 450mm centres to masonry.
3. Maintain a 20mm cavity behind cladding boards to allow for proper drainage and ventilation.
4. Install flashings and trims to specification.
5. Mark layout for even spacing and gaps.
6. Fix boards using SPAX façade screws, ensure tongue is facing upwards.
7. Conceal fixings with the next board.





## FURTHER INFORMATION

### ONSITE STORAGE

Mortlock Timber kiln dry the timber to Australian Standards. It is recommended to install the timber as soon as possible after delivery so that it maintains its accuracy and straightness. If possible, the timber should be kept in its original pack until installation. If it is repacked, it should be done the same as the original pack to maintain straightness and quality. Ensure that it is at least 50mm above ground and stored on a flat surface to prevent bowing. It should be stored in a cool dry place out of the weather until ready to install.

### WARRANTY

Mortlock Timber provides project specific warranties which must be requested prior to ordering material.

### CLEANING

If cleaning is required, use a soft-bristled broom, brushing in the direction of the timber grain. Stains can be treated with warm soapy water or timber cleaners compatible with the coating.



### MAINTENANCE

Proper maintenance ensures the longevity and appearance of your timber finish. Each coating system has different needs based on exposure and application:

- Cutek CD50 is a low-maintenance oil that fades naturally without flaking. Clear oil will silver off over time or retain colour longer if tinted. We recommend a second coat shortly after installation and ongoing maintenance every 12–18 months for exposed exterior areas. No sanding is required for reapplication.
- WOCA Exterior Oil is designed to protect against UV and water damage while enhancing the grain. For exterior cladding, a second coat 4–6 weeks after installation is ideal. Ongoing recoats are typically required every 1–3 years, depending on exposure. Interior use generally requires little or no maintenance.

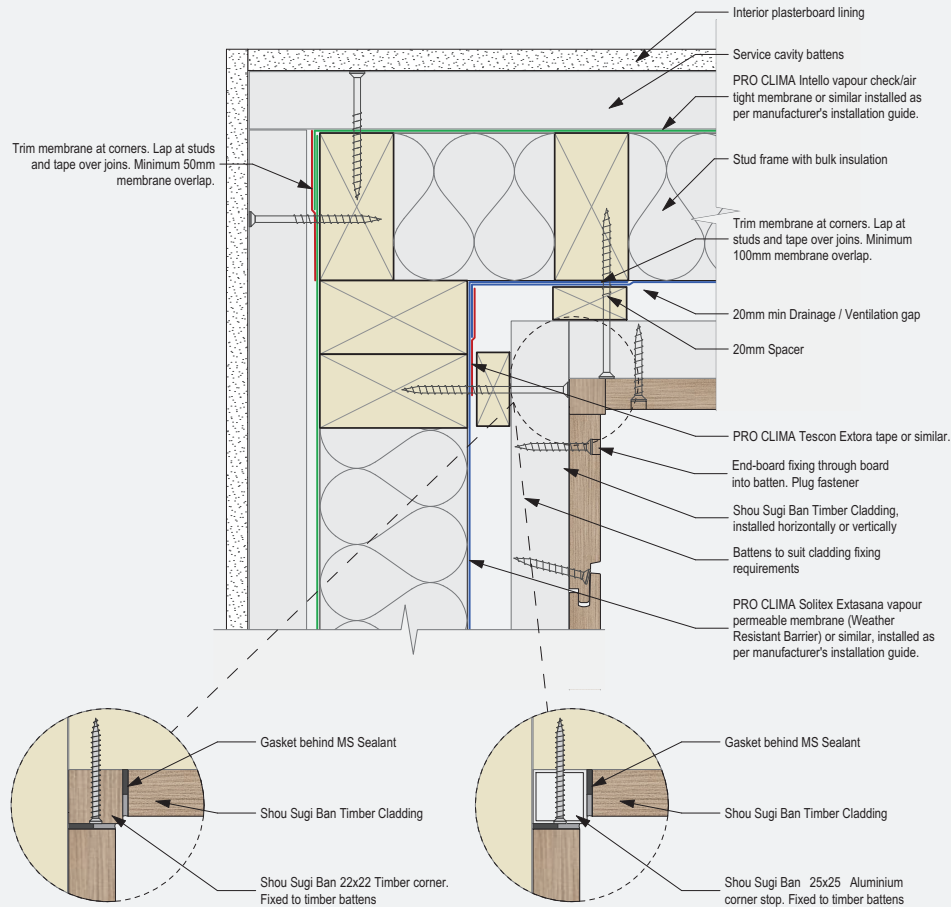
For project-specific care, please refer to individual product datasheets or contact Mortlock Timber's team for tailored advice





# INSTALLATION DIAGRAMS

## INTERNAL CORNER

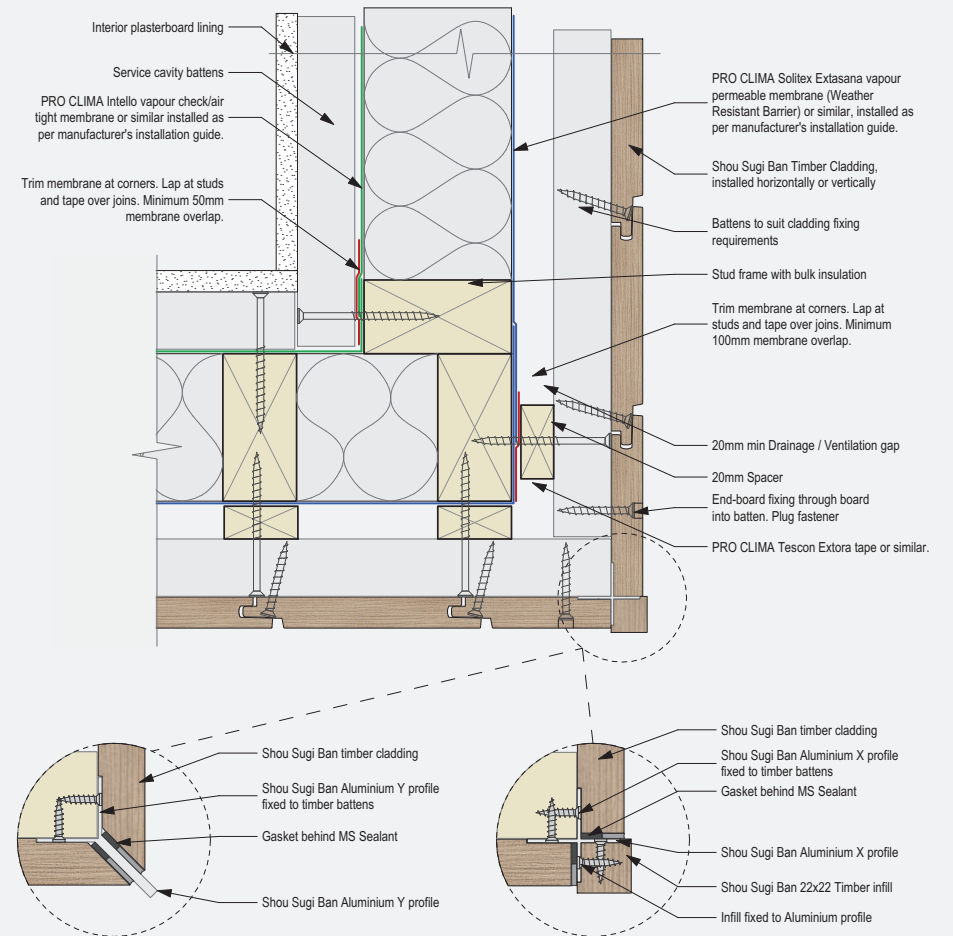


Interactive Assembly Instructions Available



Get WorkingSpec from Apple App Store/Google Play

## EXTERNAL CORNER



Interactive Assembly Instructions Available

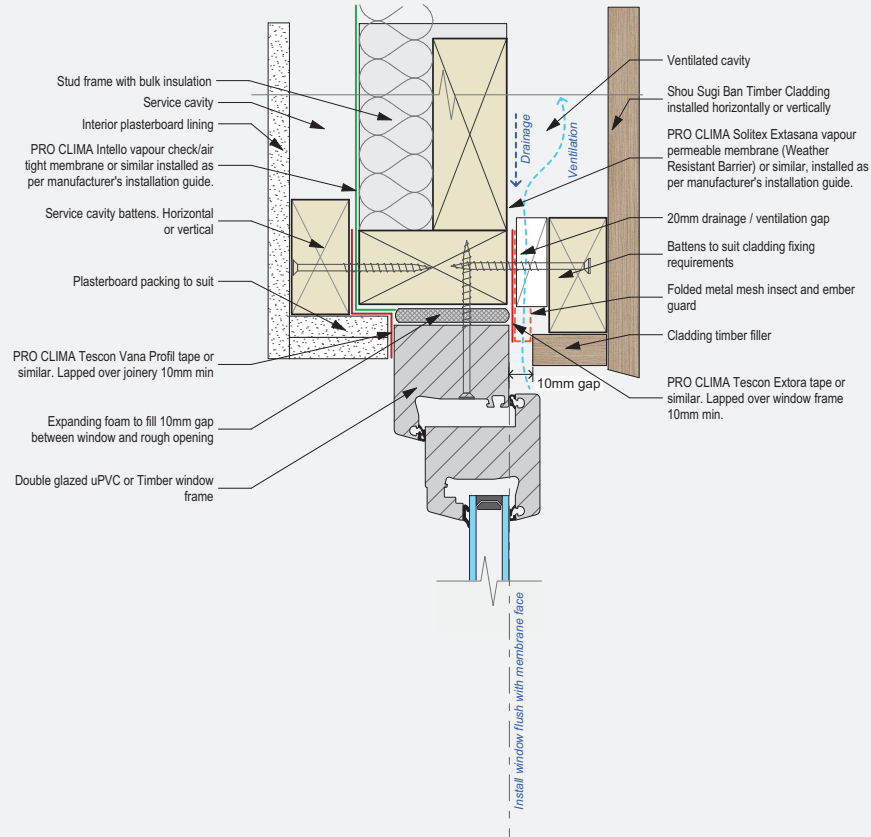


Get WorkingSpec from Apple App Store/Google Play

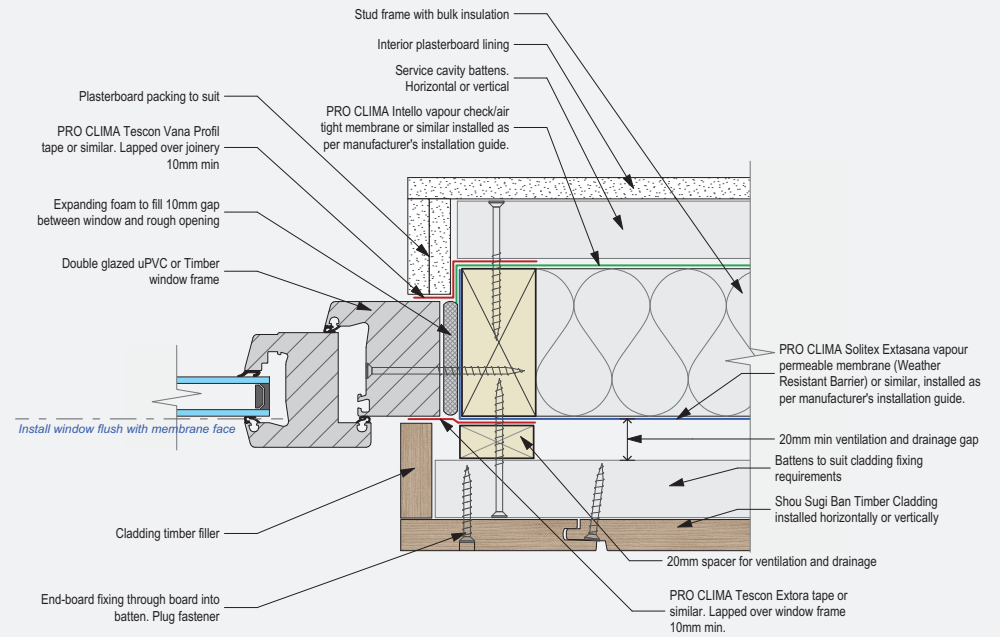


# INSTALLATION DIAGRAMS

## WINDOW HEAD - TIMBER/uPVC



## WINDOW JAMB - TIMBER/uPVC



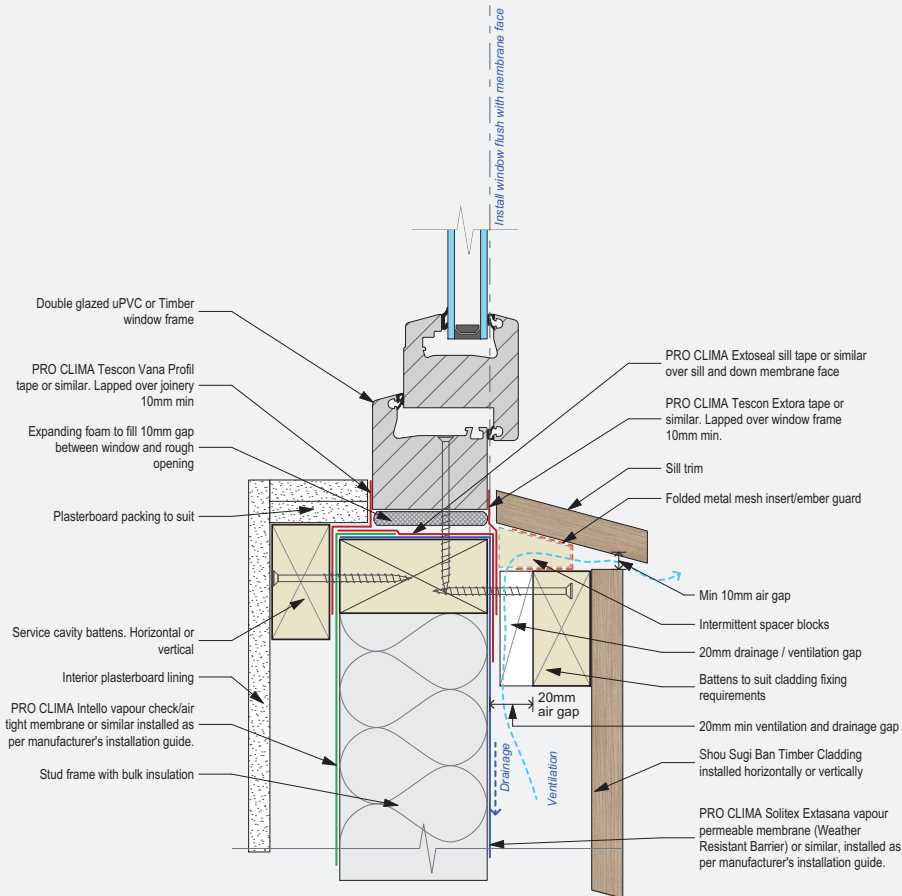
Interactive Assembly Instructions Available



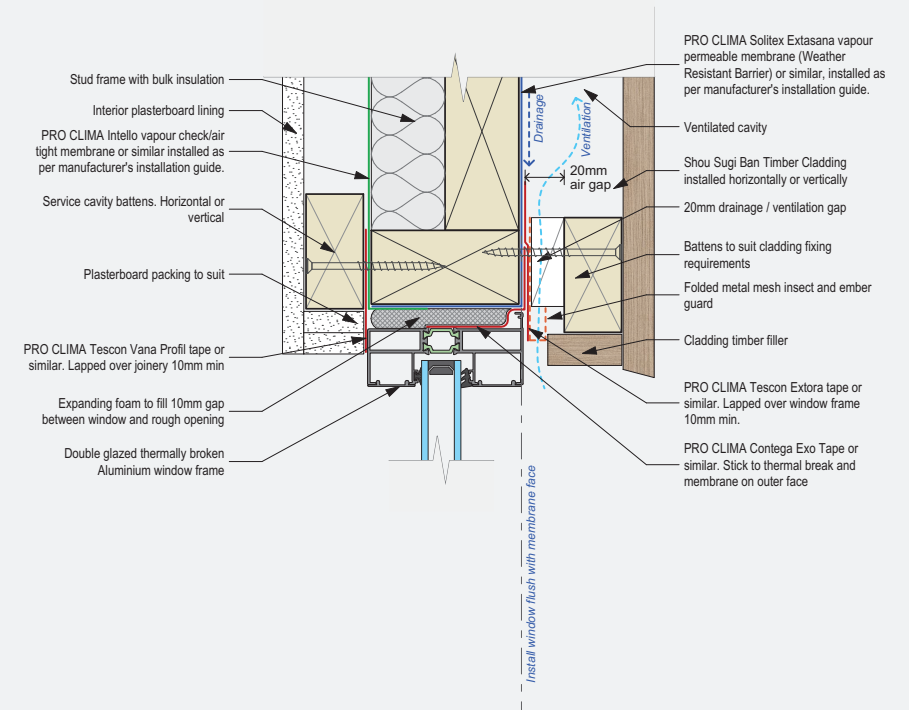
Get WorkingSpec from Apple App Store/Google Play

# INSTALLATION DIAGRAMS

## WINDOW SILL - TIMBER/uPVC



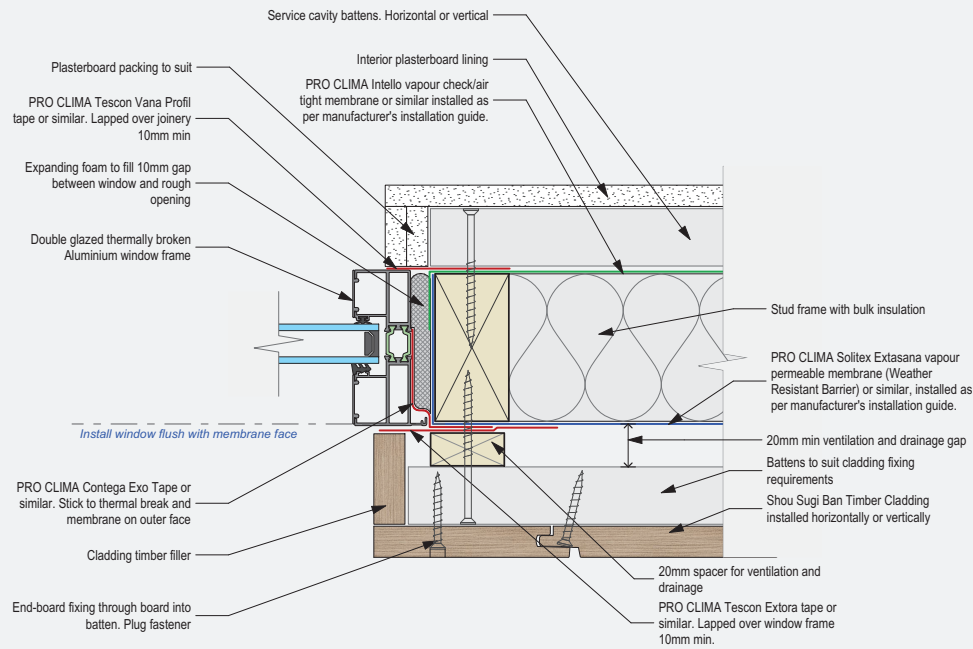
## WINDOW HEAD - ALUMINIUM



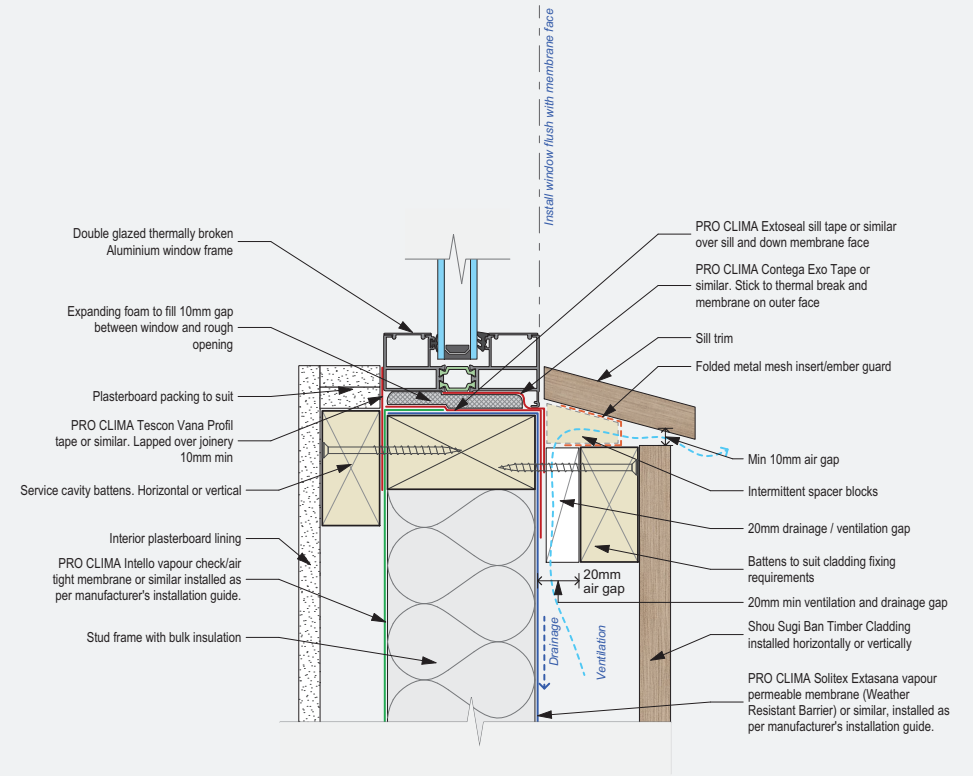


# INSTALLATION DIAGRAMS

## WINDOW JAMB -ALUMINIUM

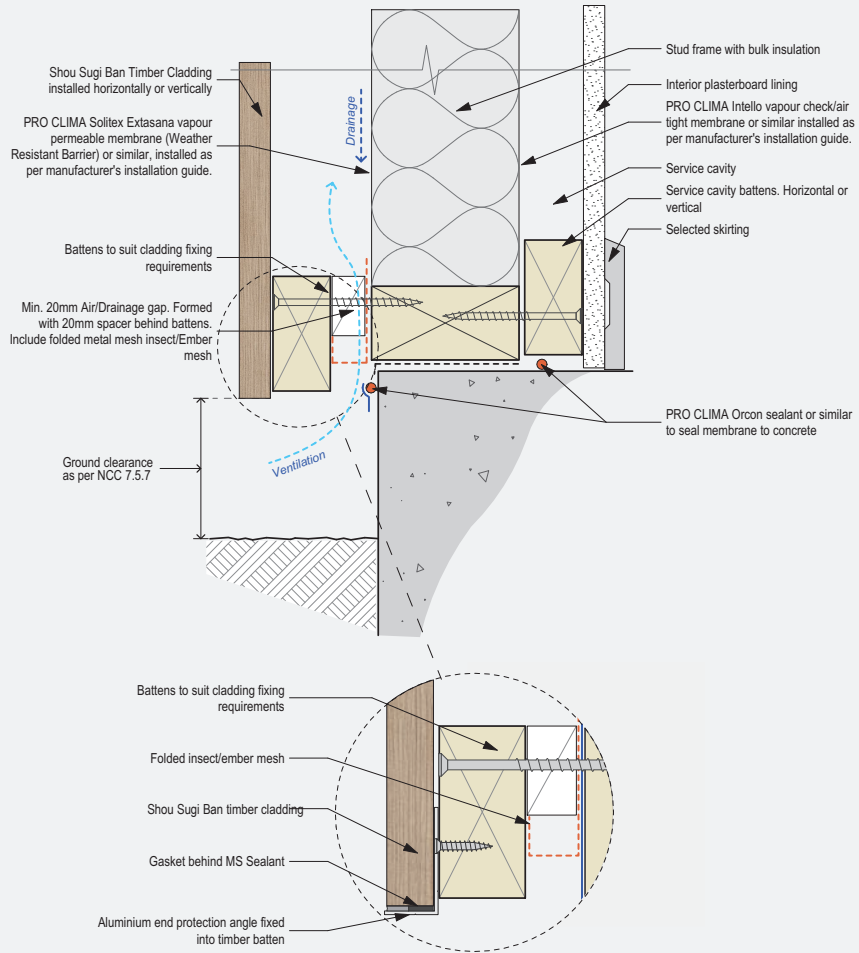


## WINDOW SILL -ALUMINIUM

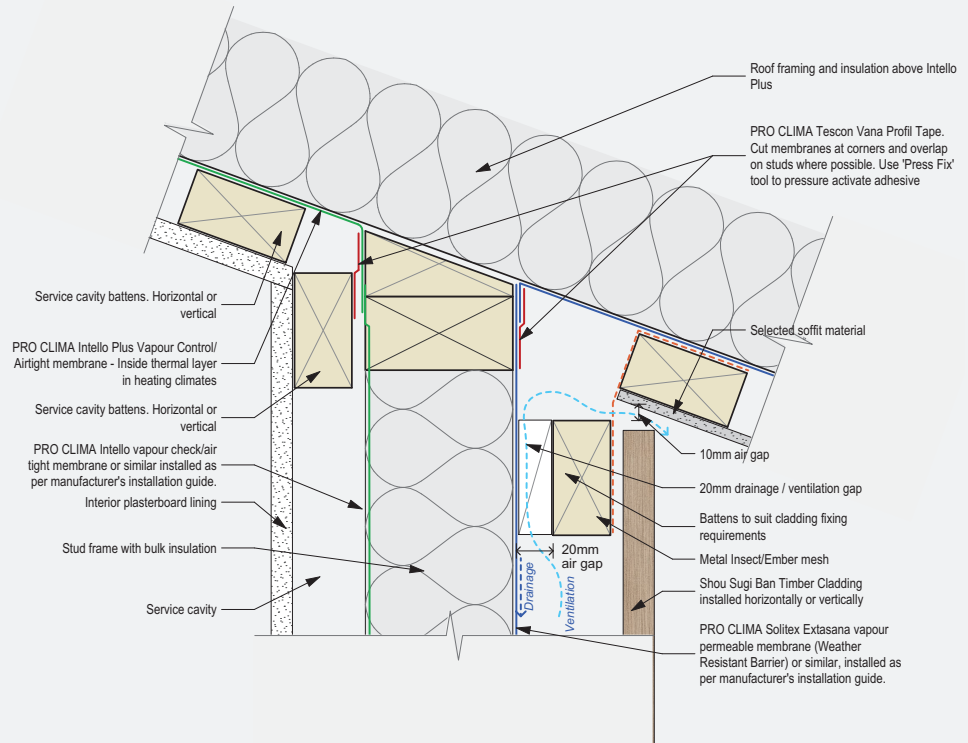


# INSTALLATION DIAGRAMS

## WALL BASE



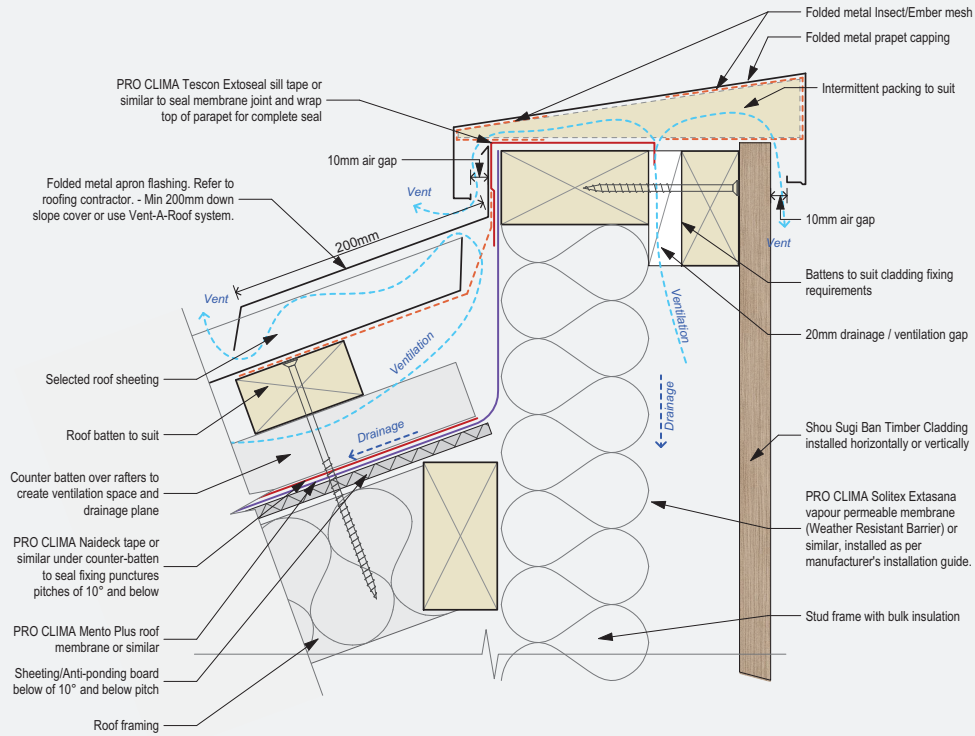
## WALL TO ROOF



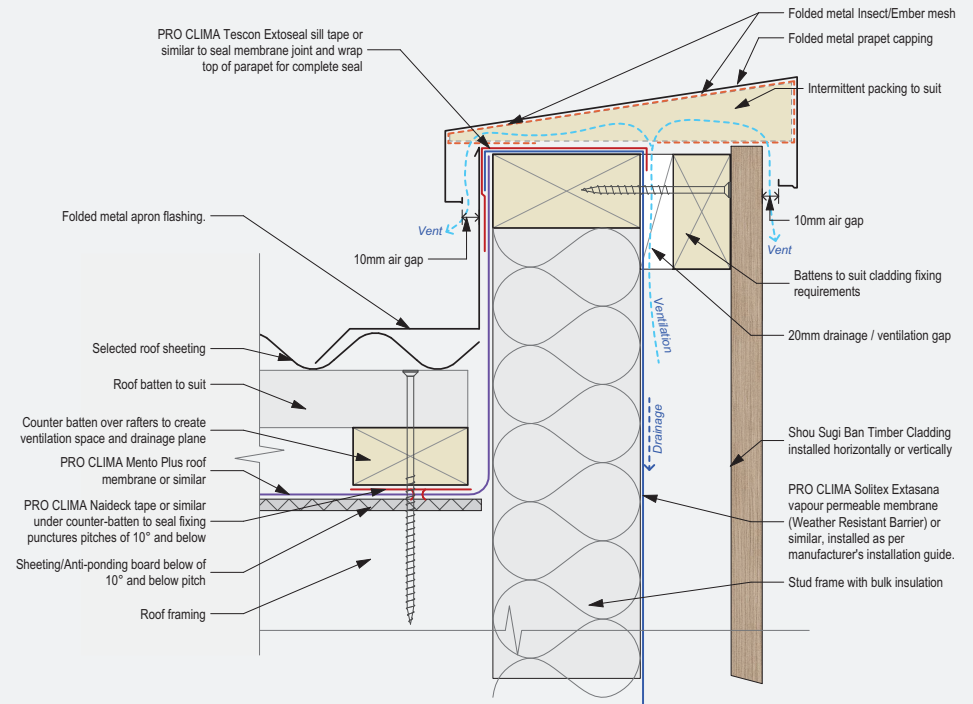


# INSTALLATION DIAGRAMS

## PARAPET - TOP OF ROOF SLOPE



## PARAPET - SIDE OF ROOF SLOPE



Interactive Assembly Instructions Available

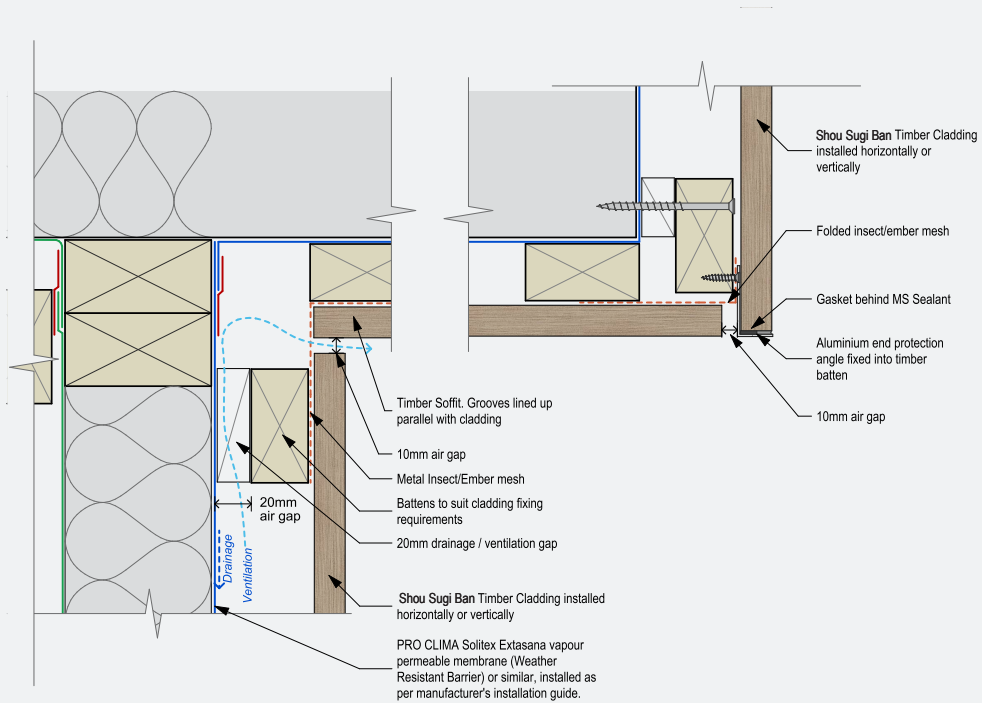


Get WorkingSpec from Apple App Store/Google Play

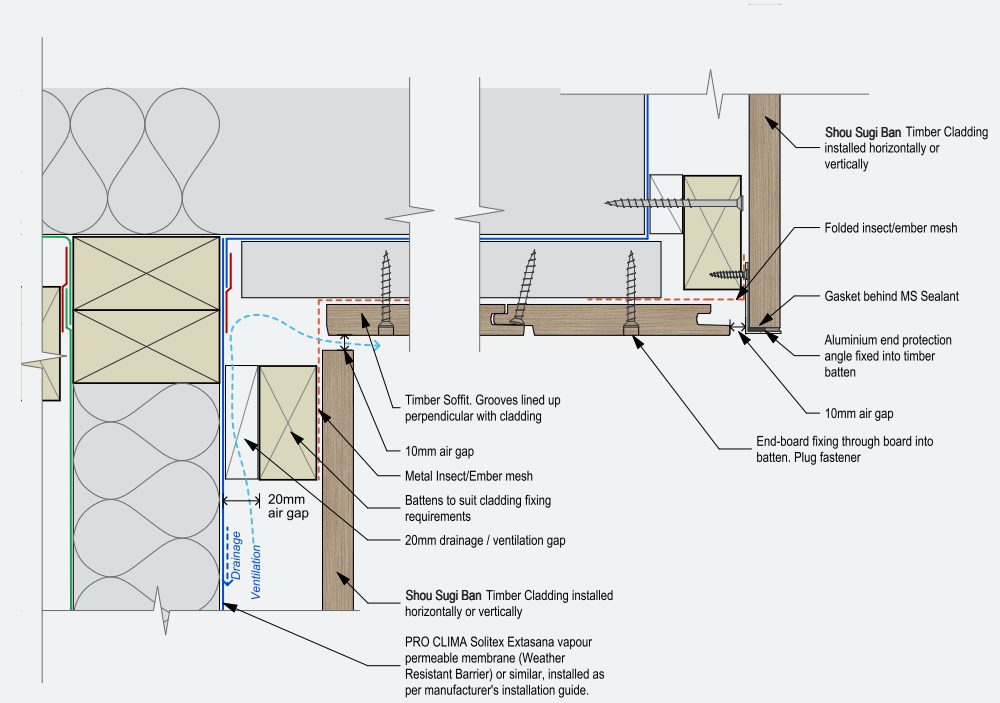


# INSTALLATION DIAGRAMS

## TIMBER SOFFIT - ALONG

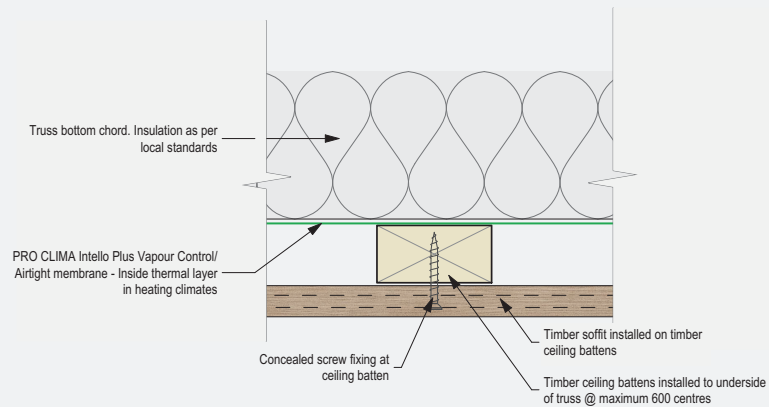
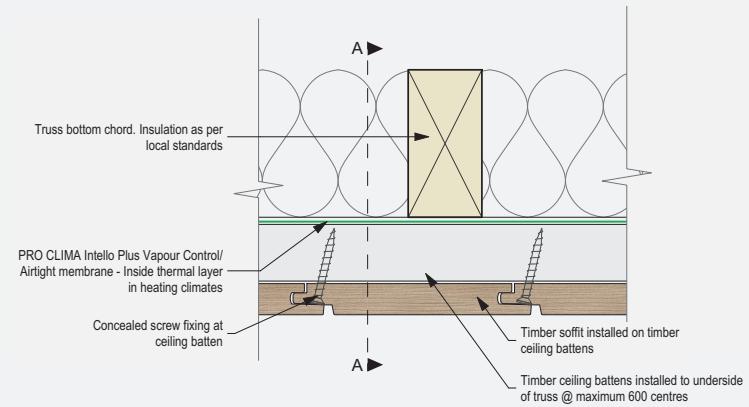


## TIMBER SOFFIT - ACROSS



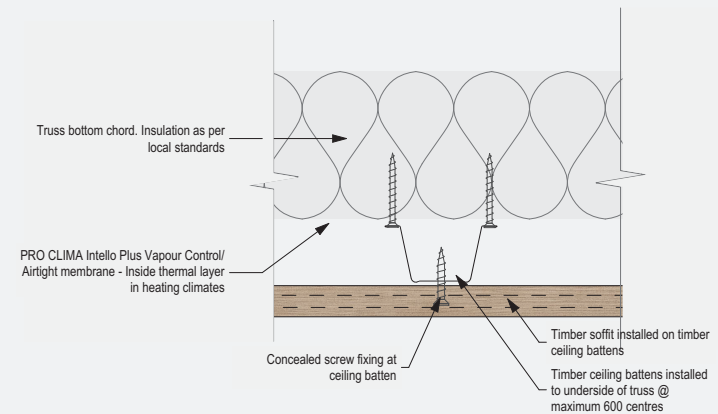
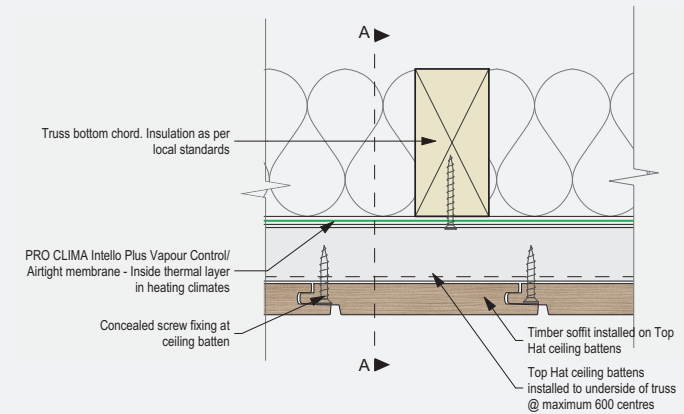
# INSTALLATION DIAGRAMS

## TIMBER CEILING - TIMBER BATTEN



Section View A-A

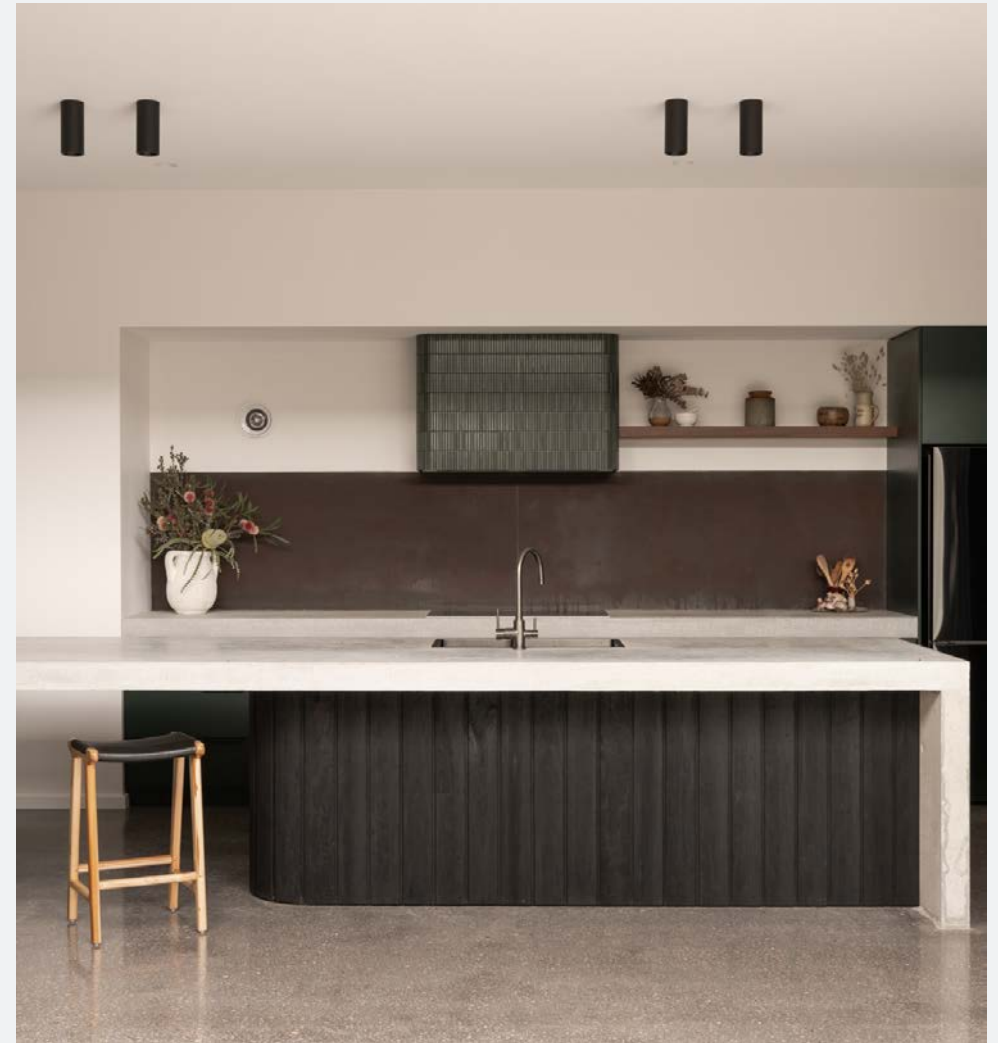
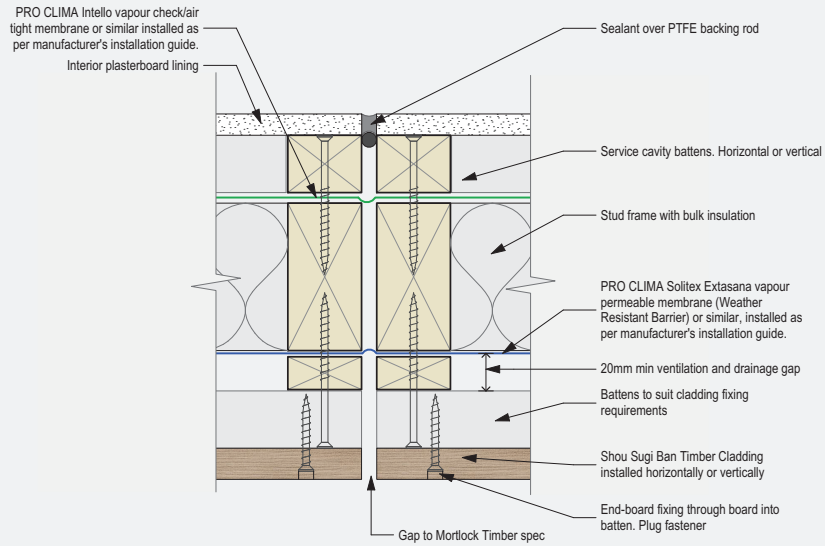
## TIMBER CEILING - TOP HAT



Section View A-A

# INSTALLATION DIAGRAMS

## EXPANSION GAP





## IMPORTANT INFORMATION

---

### TEMPORARY FLASHING

Wall cavities are not designed to drain large amounts of water. If cladding is being installed before permanent flashing or weather protection, temporary flashing needs to be installed to prevent any water getting into the cavity behind the cladding. If water does enter the wall cavity this will cause the cladding to expand and cup.

### UNEVEN WEATHERING

Uneven weathering can occur when cladding is left stacked in the sun before installation or when scaffolding remains in place for extended periods. In these cases, the shadows from the scaffolding can create a visible shadow effect on the wall. The only way to correct this is to leave the cladding exposed, allowing the weathering to even out naturally over a few months. Cladding installed in shaded areas will also weather less than timber that is fully exposed to the elements.

### MINIMUM GROUND HEIGHT

We recommend timber cladding be a minimum of 75mm above the ground to avoid moisture and dirt impacting on the finish. End grain must be sealed with an aluminium profile or similar, Shou Sugi Ban weather seal and caulking as per detail.

### BREATHABLE AIR CAVITIES

To ensure long-term durability, air cavities must be allowed so that timber is able to breathe and be kept dry. Where timber is installed vertically and battens behind cladding are horizontal, weep holes are required.

### EXPANSION ALLOWANCE

Timber is a porous material and some movement should be expected, so it's important to consider the movement effects early on. Shou Sugi Ban is not designed to be pushed up tight together, we recommend spreading the boards 1-2mm apart rather than completely tight together depending on the climate of the area.



Cladding pushed up tight



Cladding with 2mm expansion allowance



PROJECT DETAILS	
Project	Lachlan Residence
Location	Launceston, TAS
Board Size	120x18
Timber Species	Burnt Ash & Spotted Gum



PROJECT DETAILS	
Project	ARUMA
Location	Burleigh Waters, QLD
Board Size	120x19
Timber Species	Jarrah





PROJECT DETAILS	
Project	Komeyui Japanese Restaurant
Location	South Melbourne, VIC
Board Size	120×19
Timber Species	Burnt Ash



PROJECT DETAILS	
Project	Concrete House
Location	City Beach WA
Board Size	120x19 & Custom Sizes
Timber Species	Burnt Ash





PROJECT DETAILS	
Project	Lane Cove
Location	Lane Cove NSW
Board Size	120x19
Timber Species	Burnt Ash



PROJECT DETAILS	
Project	Bulli
Location	Wollongong NSW
Board Size	122x19
Timber Species	Spotted Gum



PROJECT DETAILS	
Project	Rosedale
Location	Glen Iris VIC
Board Size	120x19 & Custom Batten Sizes
Timber Species	Burnt Ash & Spotted Gum



## DESIGN & INSTALLATION CONSULTING

Our team can work through detailing and specification requirements to meet specific project requirements. We can assist with budget management without compromising aesthetics and ensure our products perform with an extended life cycle.

## SAMPLES

Mortlock Timber Group samples department is stocked with our full range. We use express delivery service and generally deliver samples to your door within 2-3 days. Custom samples and sample boards can take 3-6 weeks depending on requirements.



**MORTLOCK**  
T I M B E R

W: [www.mortlock.com.au](http://www.mortlock.com.au)

T: 1800 894 400

E: [info@mortlock.com.au](mailto:info@mortlock.com.au)

---

Distribution: WA | SA | VIC | NSW | QLD | TAS